



Food and Agriculture  
Organization of the  
United Nations



**Cefas**

# **VIRTUAL REGIONAL WORKSHOP ON BIVALVE MOLLUSCS SANITATION**

9, 10, 11 December 2020

## **Thailand**

Fisheries Commodity Standard System and  
Traceability Division, Department of Fisheries

**Ms. Supamas Kai-cum**

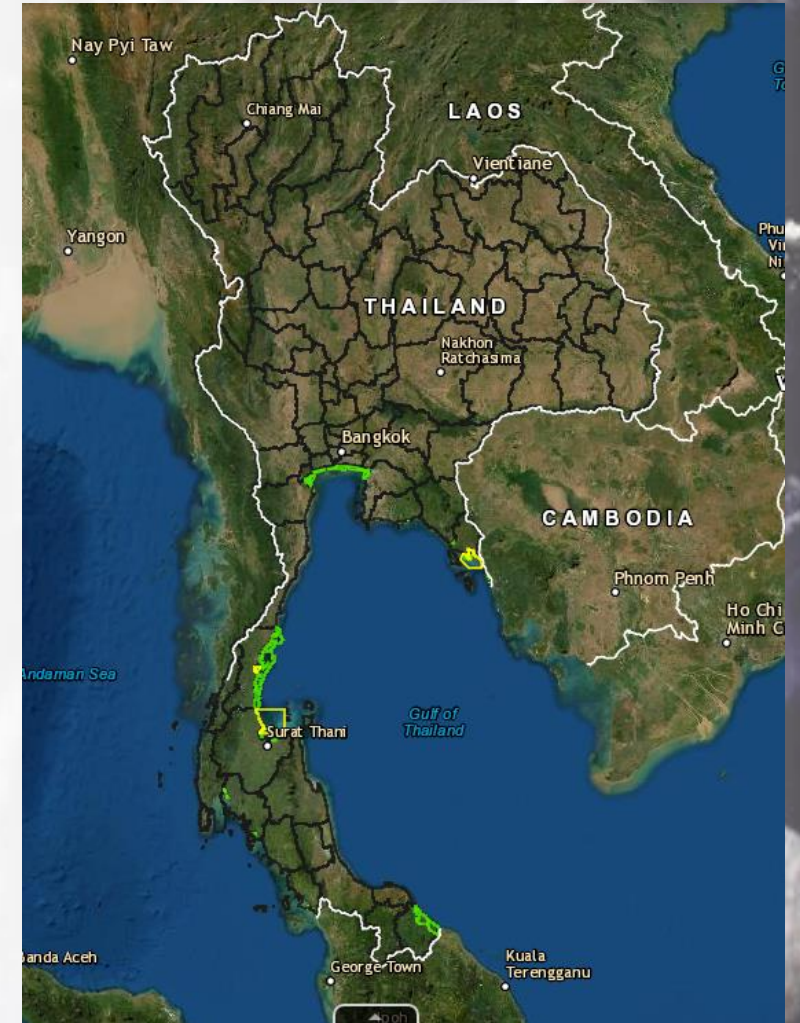
# Role of the Competent Authority

**Competent authority :**

**Department of Fisheries (DOF)**

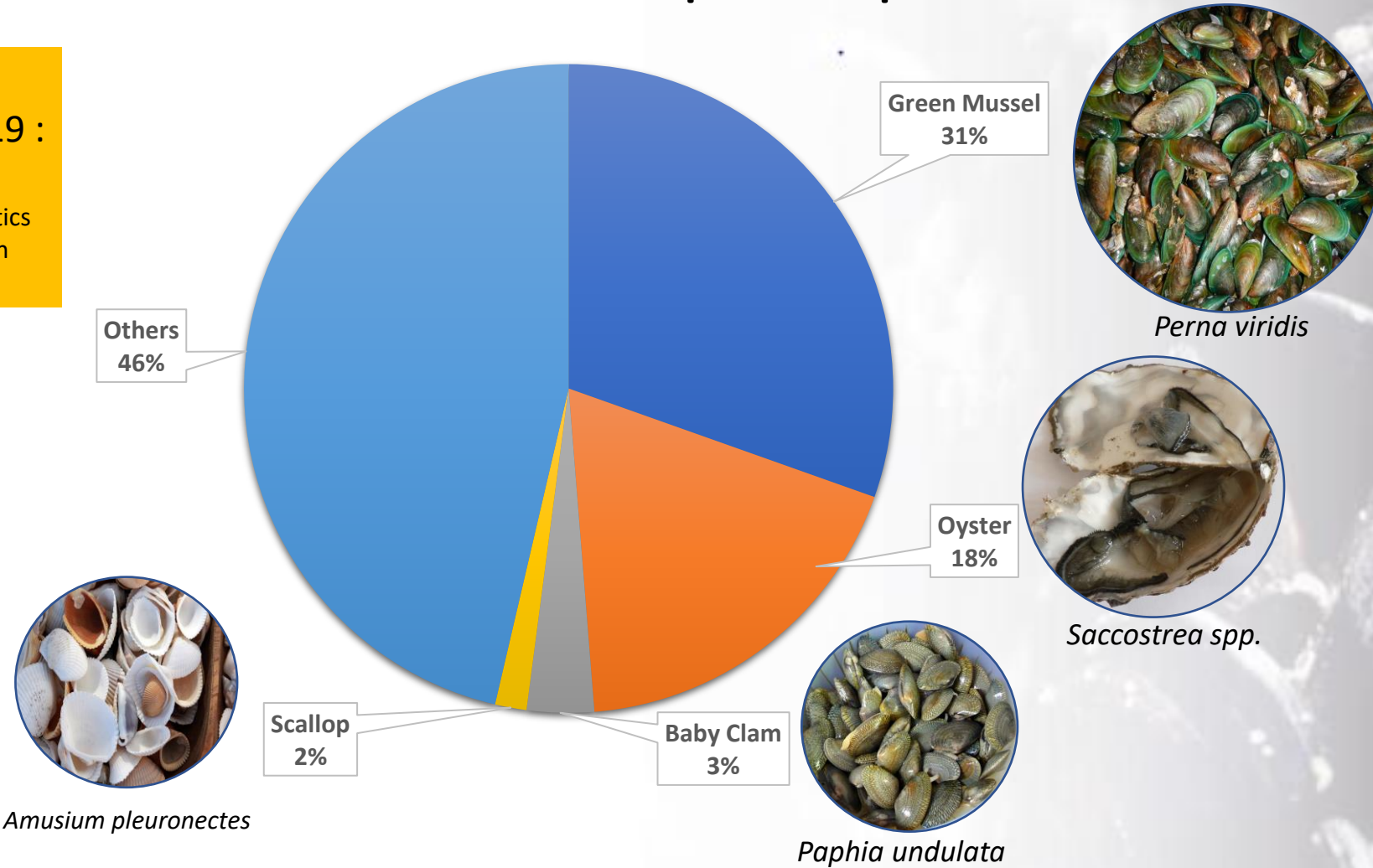
**Role** ♦ safety of bivalve molluscs production area  
♦ safety of exported fish and fishery product including bivalve molluscs of Thailand

**Legislation :** Royal Ordinance on Fisheries B.E. 2558 (2015) and No. 2 B.E. 2560 (2017)



# The production volumes and species produced

Total  
Volume in 2019 :  
123,087 tons  
(Ref : Fisheries Statistics  
Analysis and Research  
Group, 2020.)



Bivalve molluscs are produced and harvested for both domestic consumption and exporting.

# Controls, monitoring and other activities

## Classification of bivalve molluscs certified production areas

- Sanitary survey
- Sampling points selection
- Sanitary classification

## Quality monitoring of bivalve molluscs and harvesting areas

- Responsible agencies and activities
- monitoring program

## Management

- Closed area
- Re-opening area

## Certification

- Establishment monitoring program
- Product surveillance program

# Control of Bivalve Molluscs and Its Product

## harvesting and transporting control

- Registration and permission
- Exporting shall be harvested from approved areas
- Bivalve Mollusc Movement Document (BMMD)

## Bivalve molluscs products control

- Traceability system
- Bivalve Molluscs Movement Document (BMMD)
- GMP and HACCP

## Quality and safety control of scallop

- Bivalve Molluscs Movement Document (BMMD)
- Traceability system
- Monitoring on microbiological contamination and heavy metal
- GMP and HACCP

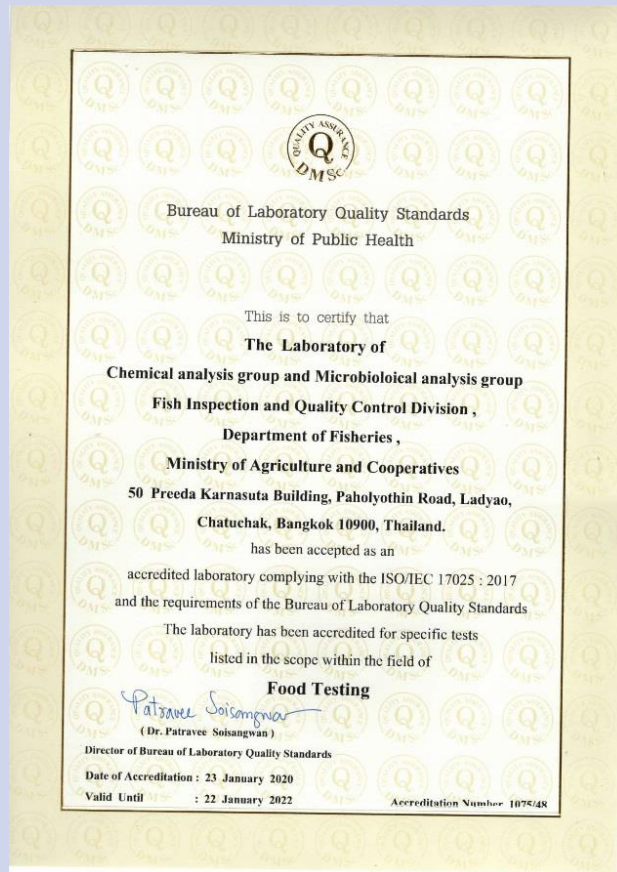
# Official Control laboratories

Laboratories	Analysis items	Responsible location
1. Fish Inspection and Quality Control Division (FIQD), Bangkok	<i>E. coli</i> , Biotoxins and Heavy metals in bivalve molluscs	Central and Eastern part
2. Fish Inspection and Research Center (FIRC) , Surat Thani		Southern part
3. Eastern Gulf Fisheries Research and Development Center (MFRD), Rayong	Phytoplanktons and Heavy metals in Sea water	Eastern part
4. Central Gulf Fisheries Research and Development Center, Chumphon		Southern part
5. Fishing Ground Inspection and Certification Group, Bangkok		Central part

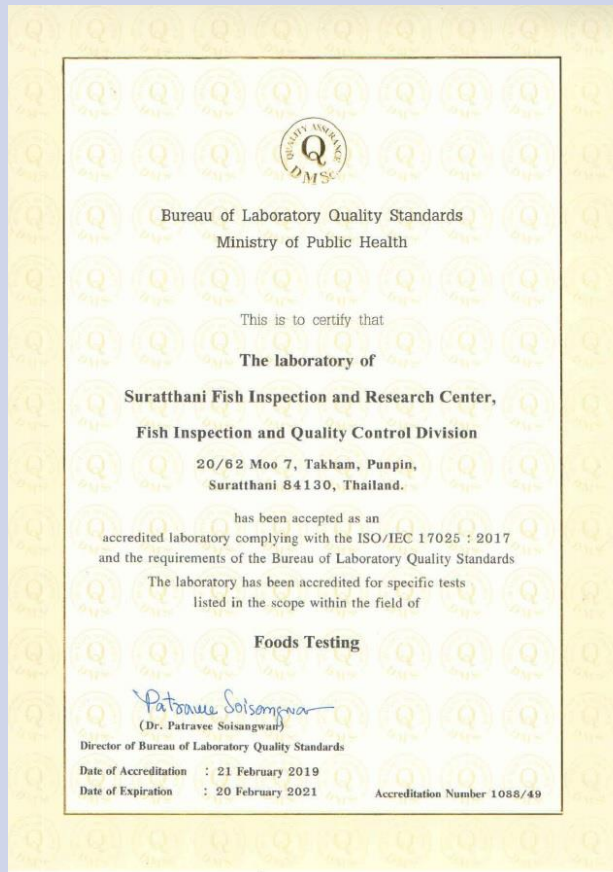
There are 5 official laboratories in charge of bivalve molluscs food safety monitoring program.

# Certification for ISO 17025:2017 laboratories

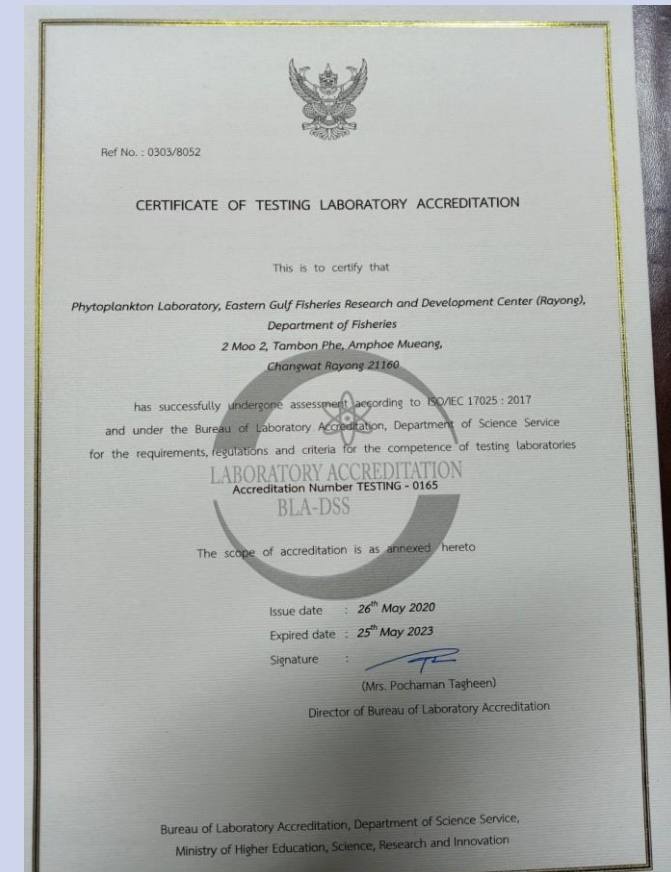
## FIQD, Bangkok



## FIRC, Surat Thani



## MFRD, Rayong



# Information on cases or outbreaks from Bivalve molluscs

- None
- Responsible agency
  - 🖱️ Bureau of Food Safety Extension and Support
    - Ministry of Public Health







THANK YOU

