



Food and Agriculture
Organization of the
United Nations



Cefas

VIRTUAL REGIONAL WORKSHOP ON **BIVALVE MOLLUSCS** SANITATION

9, 10, 11 December 2020

BIVALVE MOLLUSC SANITATION PRACTICES IN TURKEY

TURKEY

General Directorate for Fisheries and Aquaculture,
Ministry of Agriculture and Forestry of the Republic of Turkey

Hüseyin DEDE, MSc.

Competent Authority (CA) in Turkey For BM

- CA is Ministry of Agriculture and Forestry in Turkey.
- General Directorate of Food and Control is the main General Directorate in collaboration with General Directorate of Fisheries and Aquaculture and other related Authorities.
- « *Veterinary Services, Phytosanitary, Food And Feed Law and Fishery Law* » is the main legislation for BM
- Secondary legislation also applies (Regulation, Decree, Instruction etc.)
- «*Implementation Instructions Regarding the Determination, Classification, Opening and Closing of the Product Catching and Sampling of Bivalve Molluscs Production Areas Obtained Through Fishing or Gathering or Aquaculture*» provides main Instructions for controls, monitoring or other activities regarding BM

Controls, Monitoring or Other Activities

- Identification of BM Production Areas,
 - Coordinates,
 - Sampling Points etc.
 - Sample Analysing Parameters and Frequency
- Monitoring and Sanitary Survey,
 - ❖ Listing Industrial and Agricultural Contaminant Resources and Animal Origin Pollutants, and
 - ❖ Monitoring Parameters in the Context of Instructions.
 - ❖ Meteorological and Bathymetric Information (tide and current changes etc.).
 - ❖ Population and Urbanization Information (discharge and purification).
 - ❖ Water Parameters and Observations.

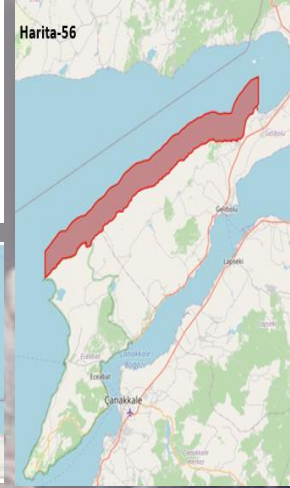
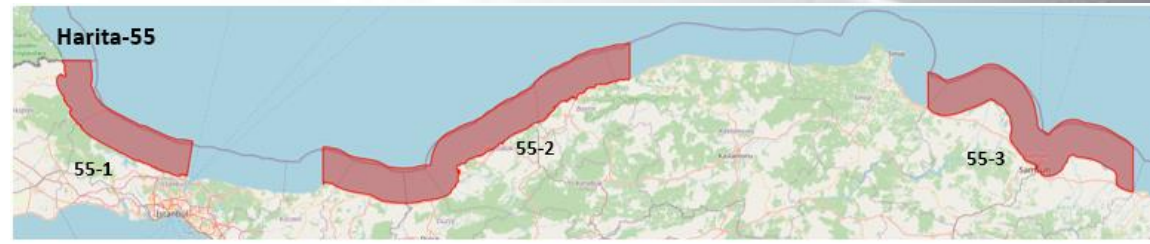
Controls, Monitoring Or Other Activities

- Assessment of Monitoring and Sanitary Survey Results (Desk Work),
 - ❖ Assessment with all information including the requirements of other ministries
 - Tourism,
 - Maritime,
 - Security,
 - Urbanisation etc.
- Classification of Production Areas and Aquaculture Areas,
 - ✓ Class A
 - ✓ Class B
 - ✓ Class C
- Approval of Purification Centre or Relaying Areas,
- Permission for Aquaculture Activities for BM,
- Announcement of Classification of Production Areas to the related parties,
 - Fishermen, gatherer, producer, provinces, Labs, Borders.

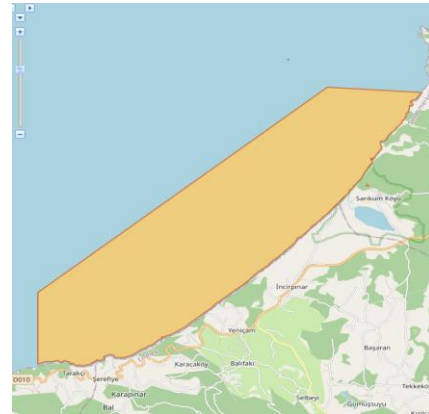
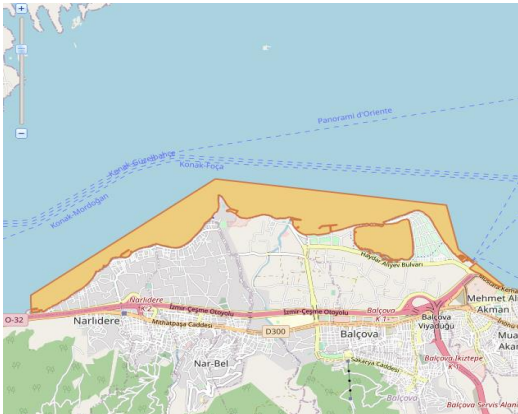


Production or Harvesting Areas BM for Fishing

BM Production areas are being opened and closed according to Fishing Decree for sustainability purposes



Production areas are identified with coordinates, sampling points, species and, class A or B are monitored and controlled



Labs and Institutes Responsible for Control and Monitoring BM Areas

Analysis	Sample	Sampling Frequency		İzmir**		İstanbul**		National Ref. Lab		Kocaeli**		Balıkesir**		Çanakkale**		Ankara**		Giresun**		Bursa GYAME	
		Open season	Banned season	Accredited		Accredited		Accredited		Accredited		Accredited		Accredited		Accredited		Accredited		Accredited	
Toxic algae	Sea Water	Weekly	biweekly	+																	
E. coli	Product	Biweekly	biweekly	+	+	+	+	+		+	+	+	+	+	+	+	+	+	+	+	+
Salmonella	Product	A class production areas biweekly	X	+	+	+	+	+	+	+	+	+	+	+	+	+	+	+	+	+	+
V. cholera, V. parahaemolyticus	Product	Twice a year	X	+	+	+	+			+	+			+		+	+			+	+
Coagulase positive staphylococci	Product	Twice a year *	X	+	+	+	+	+		+	+	+	+	+		+	+	+	+	+	+
E. coli (O157)	Ready to Consume Product	Twice a year	X	+	+	+	+	+		+	+			+		+	+			+	+
PSP	Product	Weekly	Weekly	+	+	+	+														
ASP	Product	Weekly	Weekly	+	+	+	+														
Okadaic Acid	Product	Weekly	Weekly	+	+	+	+														
Yesso oxins	Product	Weekly	Weekly	+	+	+	+														
Azaspir Acids	Product	Weekly	Weekly	+	+	+	+														
Lead	Product	Twice a year	once a year	+	+	+	+			+				+							
Cadmium	Product	Twice a year	once a year	+	+	+	+			+				+							
Mercury	Product	Twice a year	once a year	+	+	+	+			+				+							
Dioxins	Product	X	once a year			+	+	+													
PAH	Product	Monthly	Monthly			+	+														

*If it is produced by hand

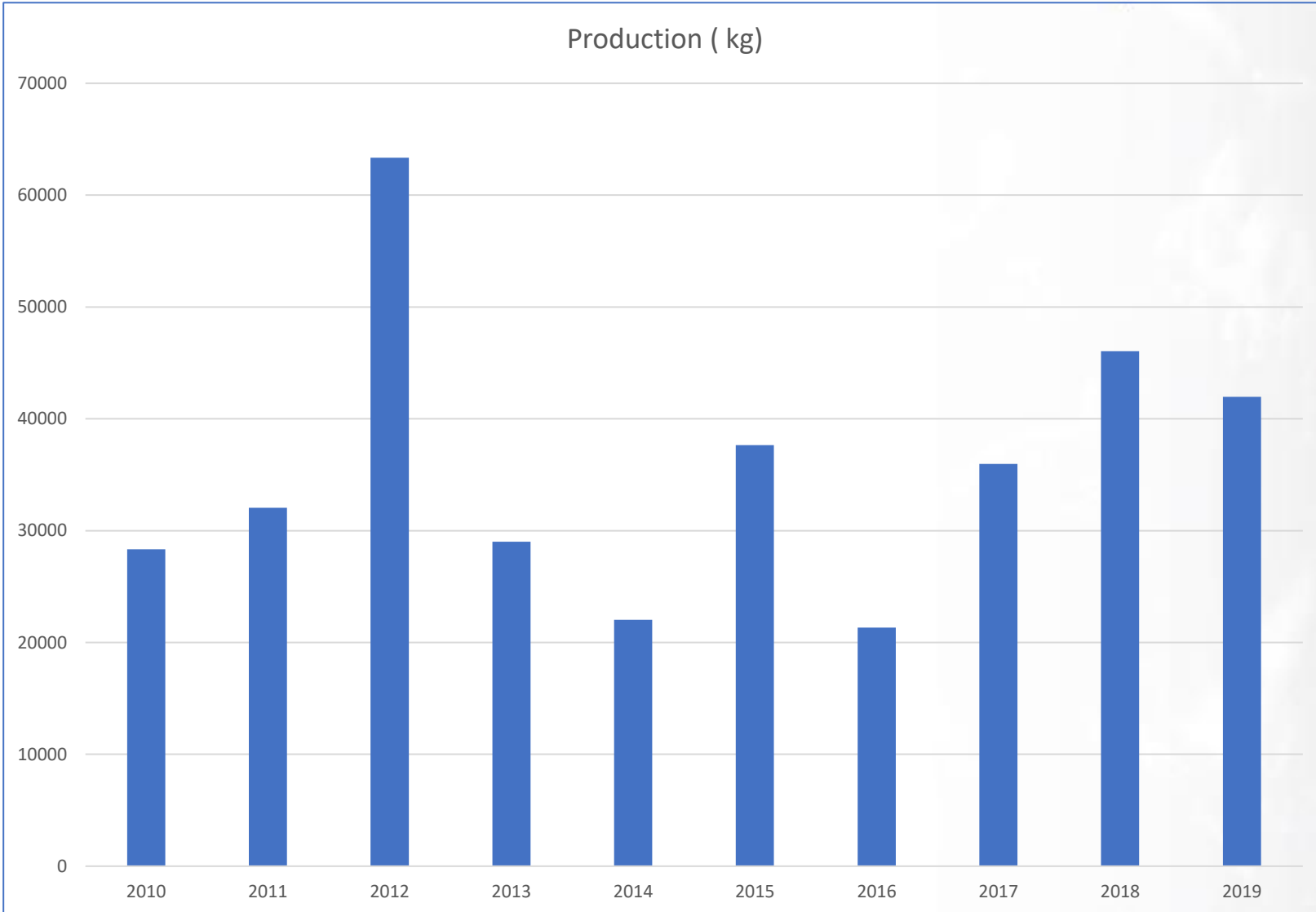
** Provincial Control Lab.

Consumption and Marketing

- In accordance with national and international legislation;
- BM products are safely consumed in the domestic market as well as exported to many countries worldwide



BM Production By Years

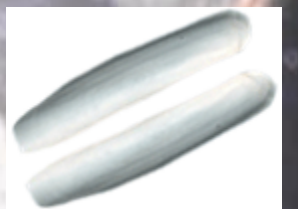


Black mussel,
Bearded mussel,
Clams,
Oyster,
Cockle,
Scallop,
Baby clams,

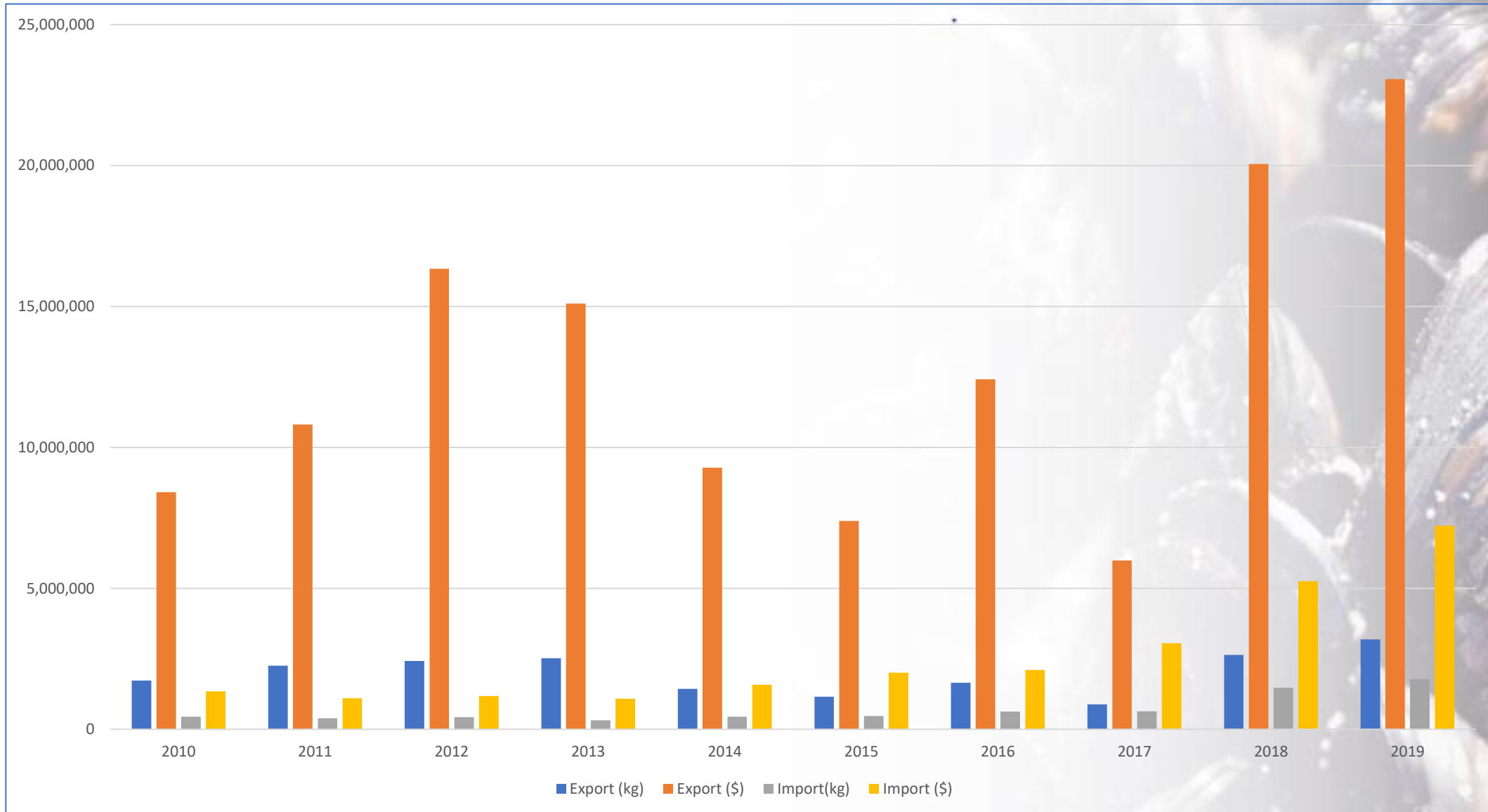


Aquaculture

Black mussel
Cockle



BM Export & Import



Public Awareness and Risk Communication

- All production areas and Production are under control of the Ministry through Central and Local Authorities,
- Areas are being closed or opened according to monitoring results,
- Fishing, harvesting or gathering are stopped by announcing to all stakeholders
- Based on their classification, a special document is issued for all products put on the market, showing that they are suitable for human consumption.
- All exporting companies have a recall system in case of need or emergency.
- Controls are carried out at every stage of marketing (harvesting, transporting, processing and marketing etc.)



Thank you

huseyin.dede@tarimorman.gov.tr