



Food and Agriculture
Organization of the
United Nations



Cefas

VIRTUAL REGIONAL WORKSHOP ON BIVALVE MOLLUSCS SANITATION

9, 10, 11 December 2020

Growing Area Risk Profiles
Michelle Price-Hayward

Growing Area Risk Profile

INTENT TO HARVEST

PROCEED?

no

NO HARVEST
ALLOWED

yes

GROWING AREA ASSESSMENT

PRIMARY MONITORING

CLASSIFICATION

Category IV

NO HARVEST
ALLOWED

Category I, II or III

ONGOING MONITORING

GROWING AREA
MANAGEMENT

REVIEW

- **First stage of process**
- **Initial assessment**
- **Results in Go/No Go Decision**

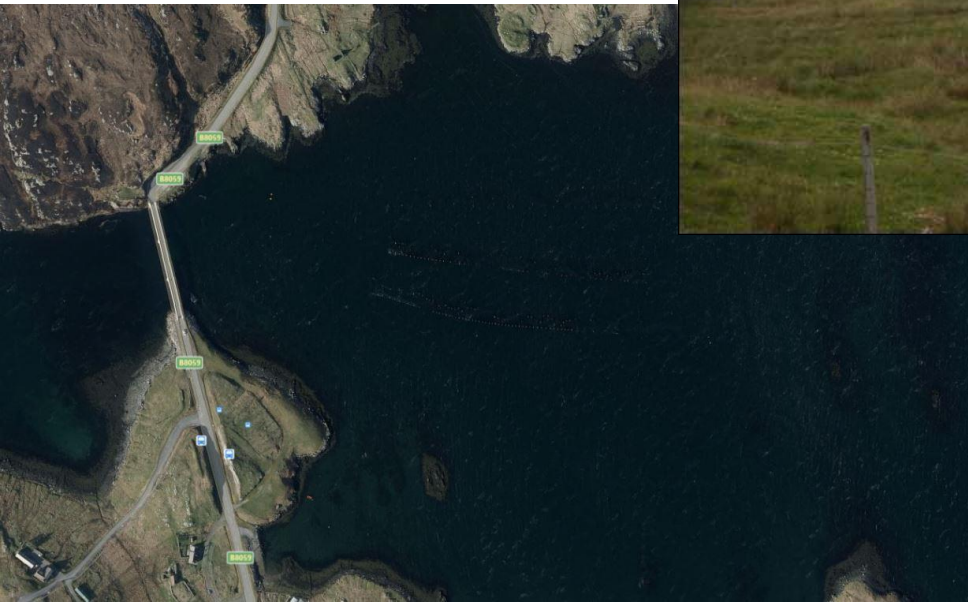
Key Parts of a Growing Area Risk Profile

1. Area overview
2. Scope
3. Existing legal framework
4. Current Industry
5. Extent of area
6. Epidemiological and public health data
7. Intended use and consumers
8. Other relevant information
9. Hazards to be considered
10. Programme capabilities
11. Cost benefit analysis
12. Conclusions and Recommendation
13. Documentation

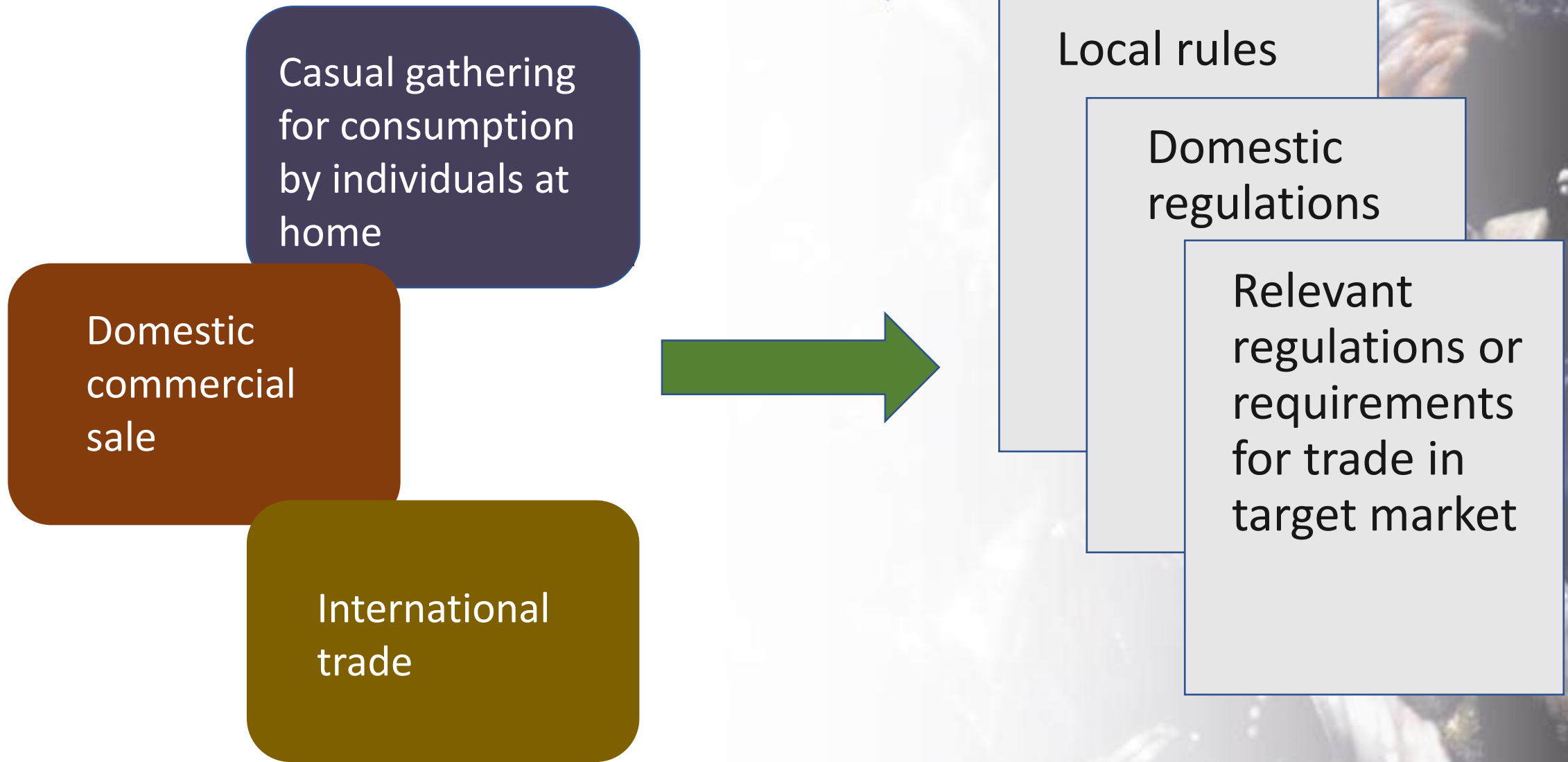


1. Area Overview

Describes the geographic location and sets context

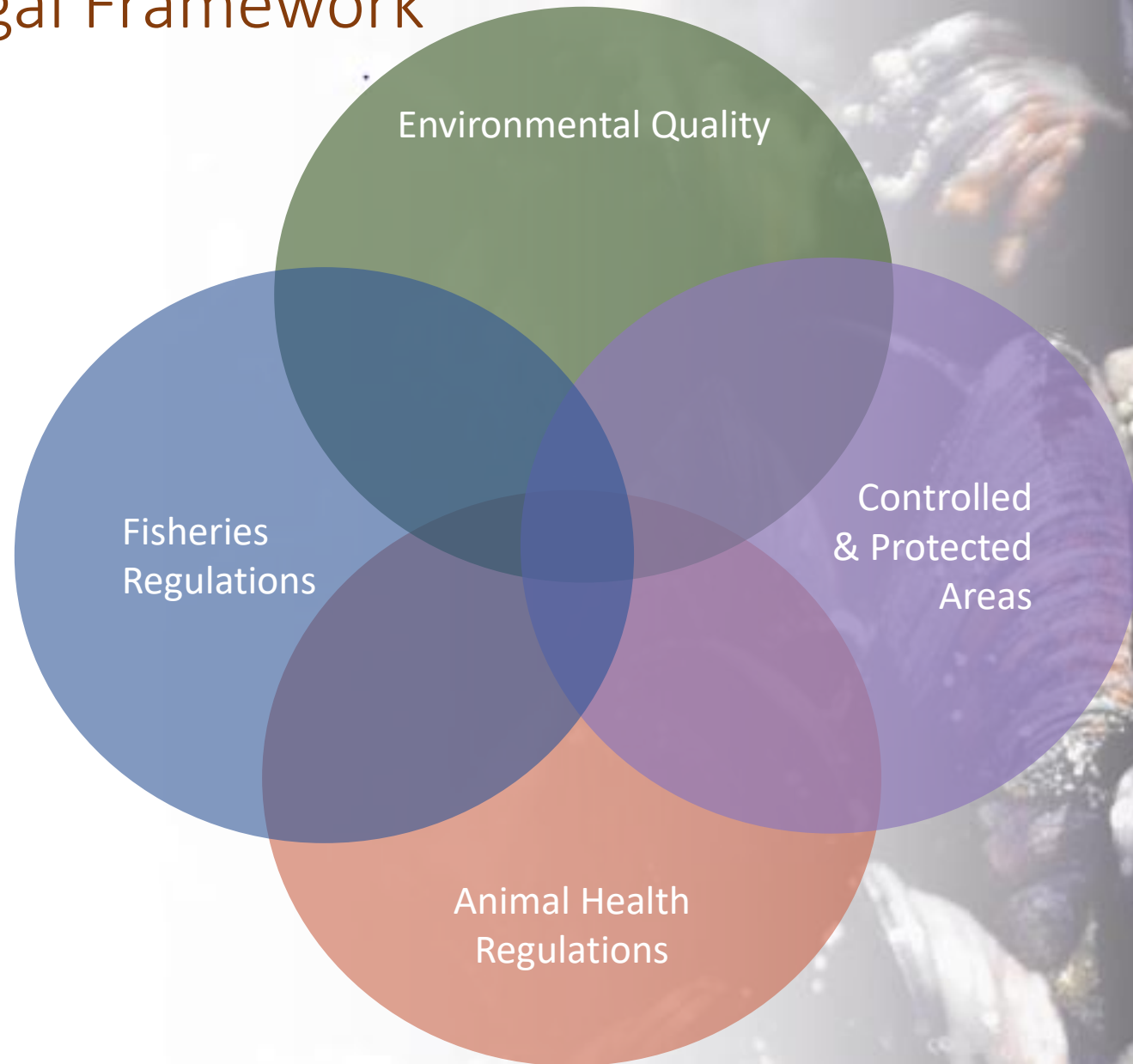


2. Scope of Risk Profile

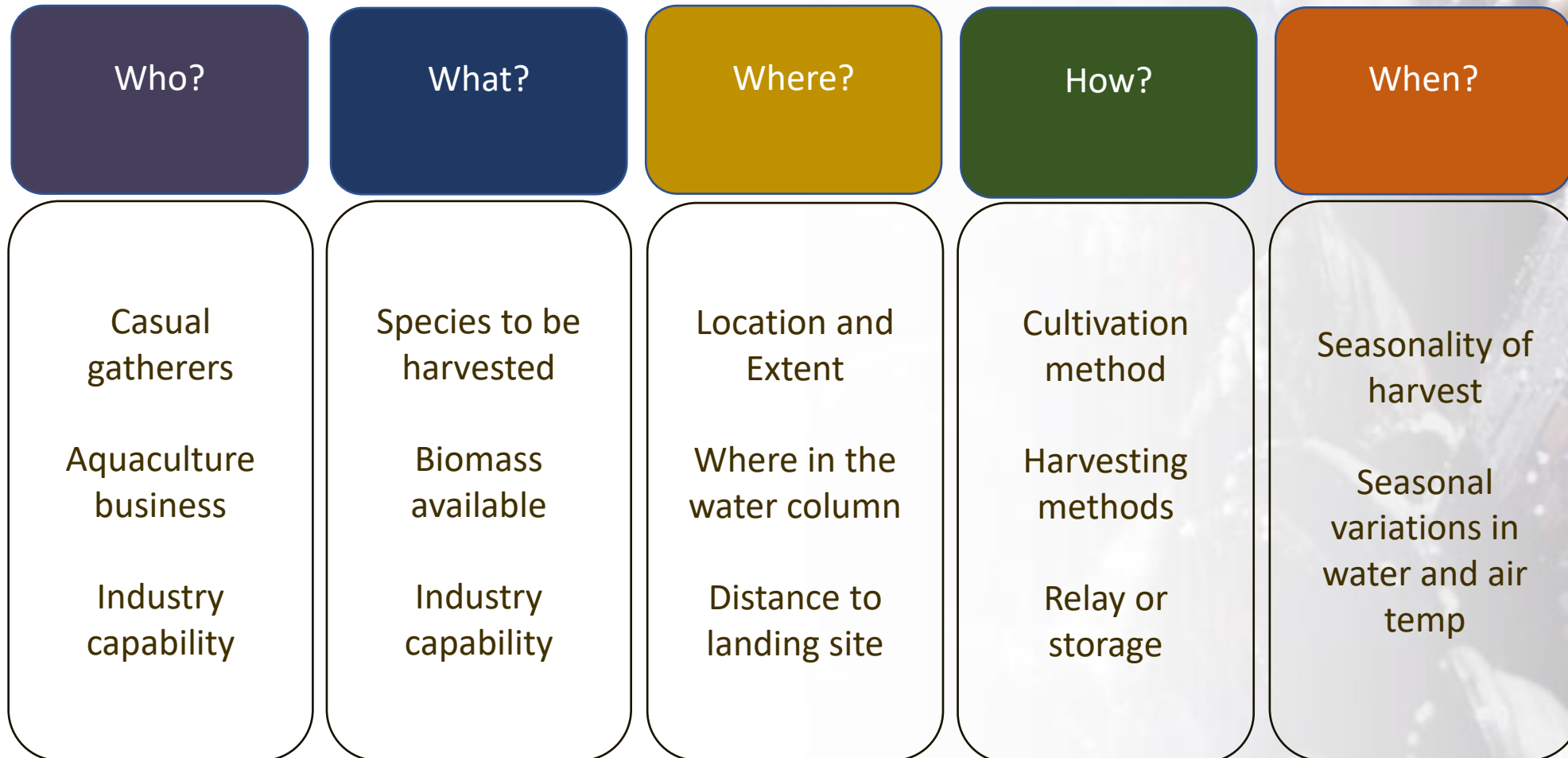


3. Existing Legal Framework

- Current relevant food safety regulations, standards and other requirements
- Jurisdictions and responsible authorities
- Other official bodies with responsibilities relating to growing areas
- Interactions between Food Safety authorities and other responsible bodies

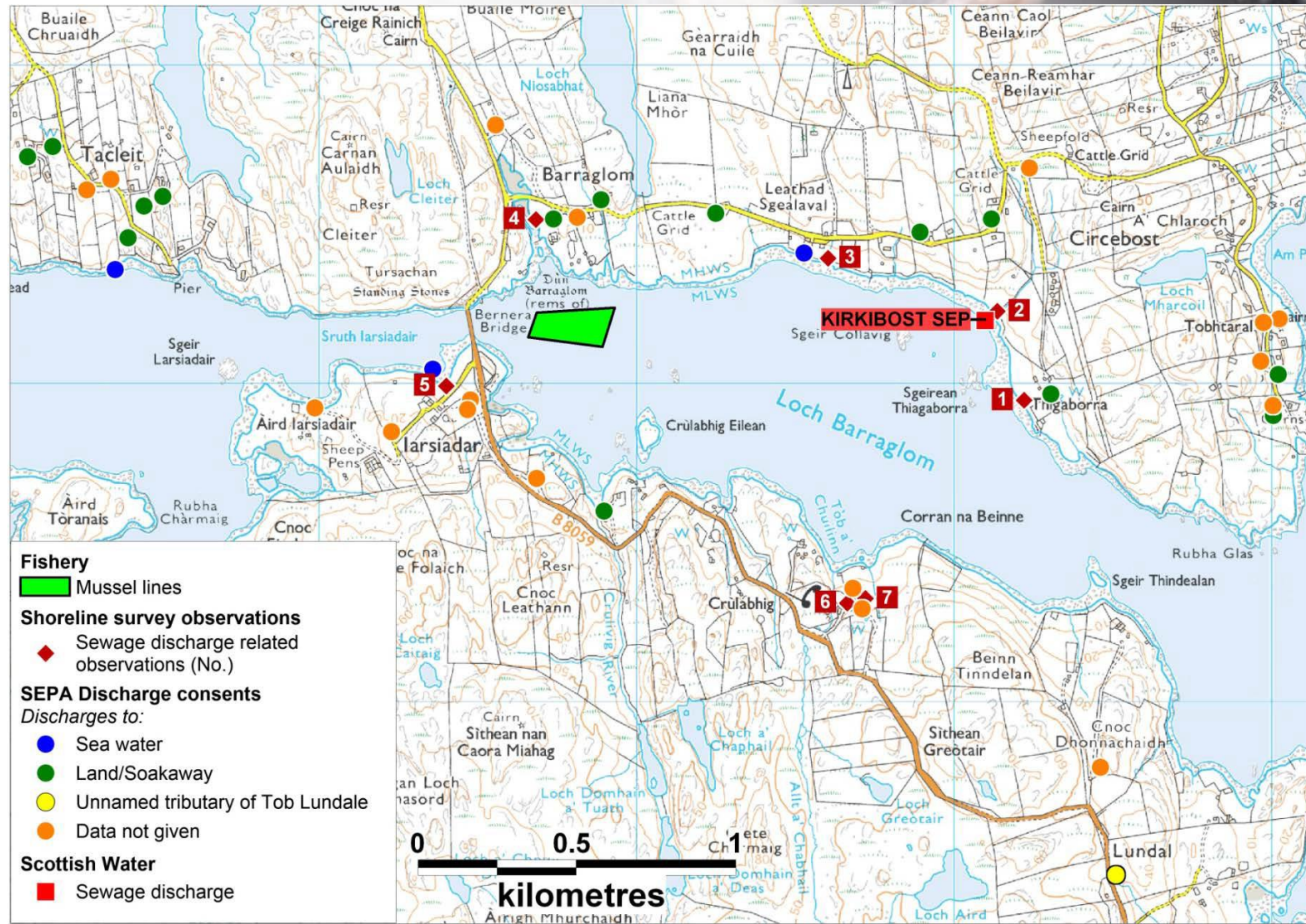


4. Current Industry and Resources



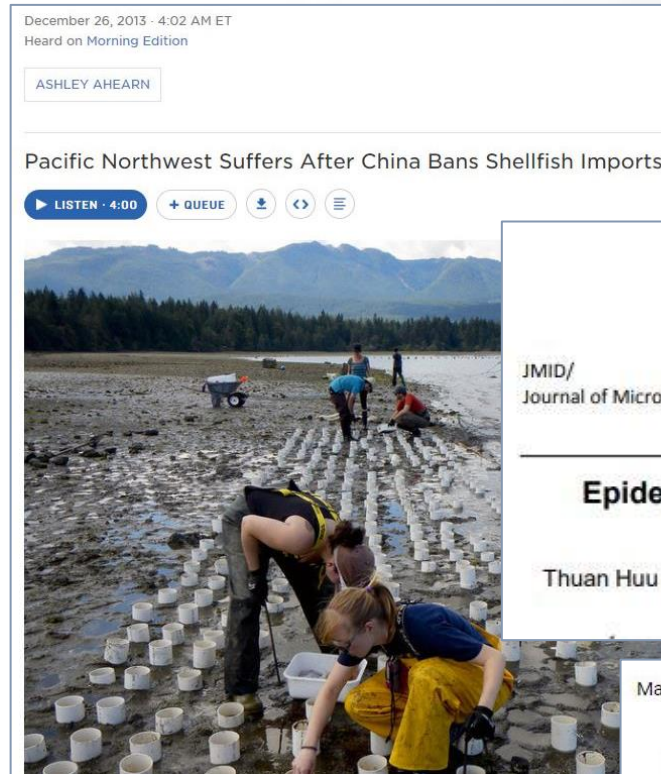
5. Extent of Assessment Area

- Extends beyond area of intended harvest
- Determines area for which data is sought
- Depends on sources and transport of contamination
- May change as further information is gathered



6. Epidemiological and Public Health Data

- Useful to identify and rank hazards
- International data
 - [Global Health Observatory \(who.int\)](http://www.who.int)
- Occurrence of illnesses in population
- Growing area specific data
- Evidence of previous outbreaks
 - Root cause investigations



7. Intended Use and Consumers

- Societal consumption patterns, considering likely consuming population
 - FAO provide guidance on consumption studies
- Presentation, processing and/or preparation
- Identify high risk consumers

