



**CabinetOffice**



# Central Government crisis response

## Politics, science and data



Paul McCloghrie  
Civil Contingencies Secretariat

**Making  
government  
work better**

# Overview

---

- Explain how central government works in a crisis
  - Crisis management structures, roles and responsibilities
  - How science and technology advice is incorporated
  - Personal experiences

# National Security Strategy



HM Government

National Security Strategy  
and Strategic Defence and  
Security Review 2015

A Secure and Prosperous  
United Kingdom

GOV.UK

Search

Departments Topics Worldwide How government works Get involved  
Policies Publications Consultations Statistics Announcements

National security and intelligence  
Part of Cabinet Office



18 October 2010 — Policy paper

## [The national security strategy - a strong Britain in an age of uncertainty](#)

This strategy describes how we need the structures in place to allow us to react quickly and effectively to new and evolving threats.

## Tier 1 Risks

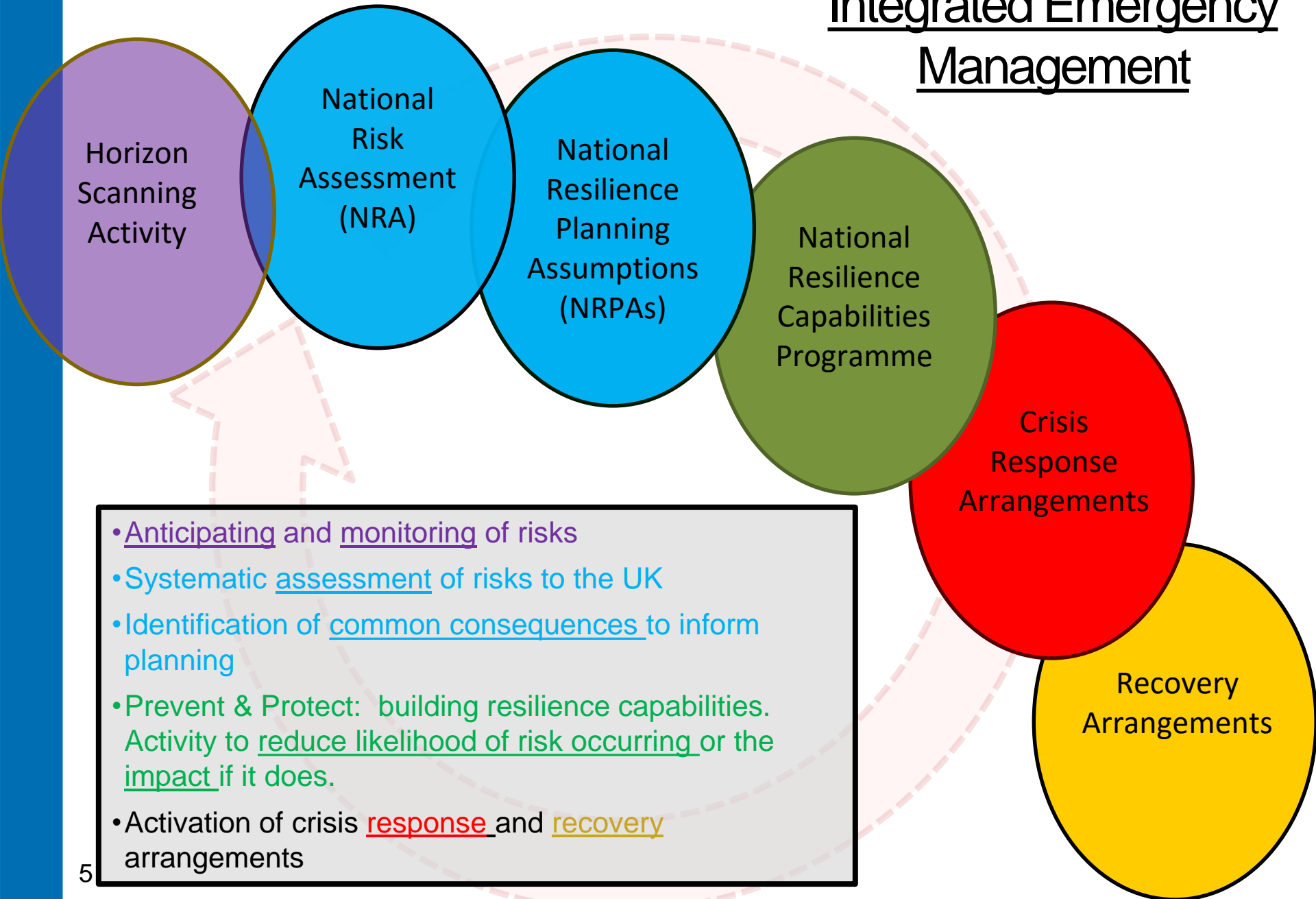
- Terrorism
- International Military Conflict
- Cyber threats
- Public Health
- **Major Natural Hazards:** Events such as severe weather and major flooding can cost lives, cause disruption to Critical National Infrastructure and provision of essential services, and have a significant economic cost.
- Instability Overseas

# Role of the Cabinet Office

---

- The Cabinet Office exists to ‘make Government work better’. It does this by:
  - Supporting the Prime Minister and Cabinet; and
  - Helping ensure the effective development, co-ordination and implementation of policy and operations across all departments.
- The Civil Contingencies Secretariat (part of the wider National Security Secretariat) provides:
  - Leadership across government in preparing for emergencies and responding to incidents
  - Improving UK resilience to disruptive challenges and identifying and managing the risk of emergencies
  - Putting in place effective crisis response arrangements

# Integrated Emergency Management



- Anticipating and monitoring of risks
- Systematic assessment of risks to the UK
- Identification of common consequences to inform planning
- **Prevent & Protect:** building resilience capabilities. Activity to reduce likelihood of risk occurring or the impact if it does.
- Activation of crisis response and recovery arrangements

# The Value of **I**ntegrated **E**mergency **M**anagement

## A Comparison of Foot and Mouth Disease in 2001 & 2007

Action	2001	2007
Plan ready, staff trained	No	Yes
Detection to ministry action	3 days	90 mins
Regulations implemented	5 days	6 hours
Effective controls on ground	14 days	12 hours
Area affected sq km	180,000	900
Costs & business losses	£20 B	<£15 M

# Command, Control and Coordination





# COBR



- Commissioned 1972 following 'Black September' attack on Israeli Team at Munich Olympics
- Response to a new and more sophisticated threat from international terrorism
- Role expanded significantly since 2000 to include responding to civil emergencies
- Designed to replicate, in miniature key machinery of Whitehall in a single location

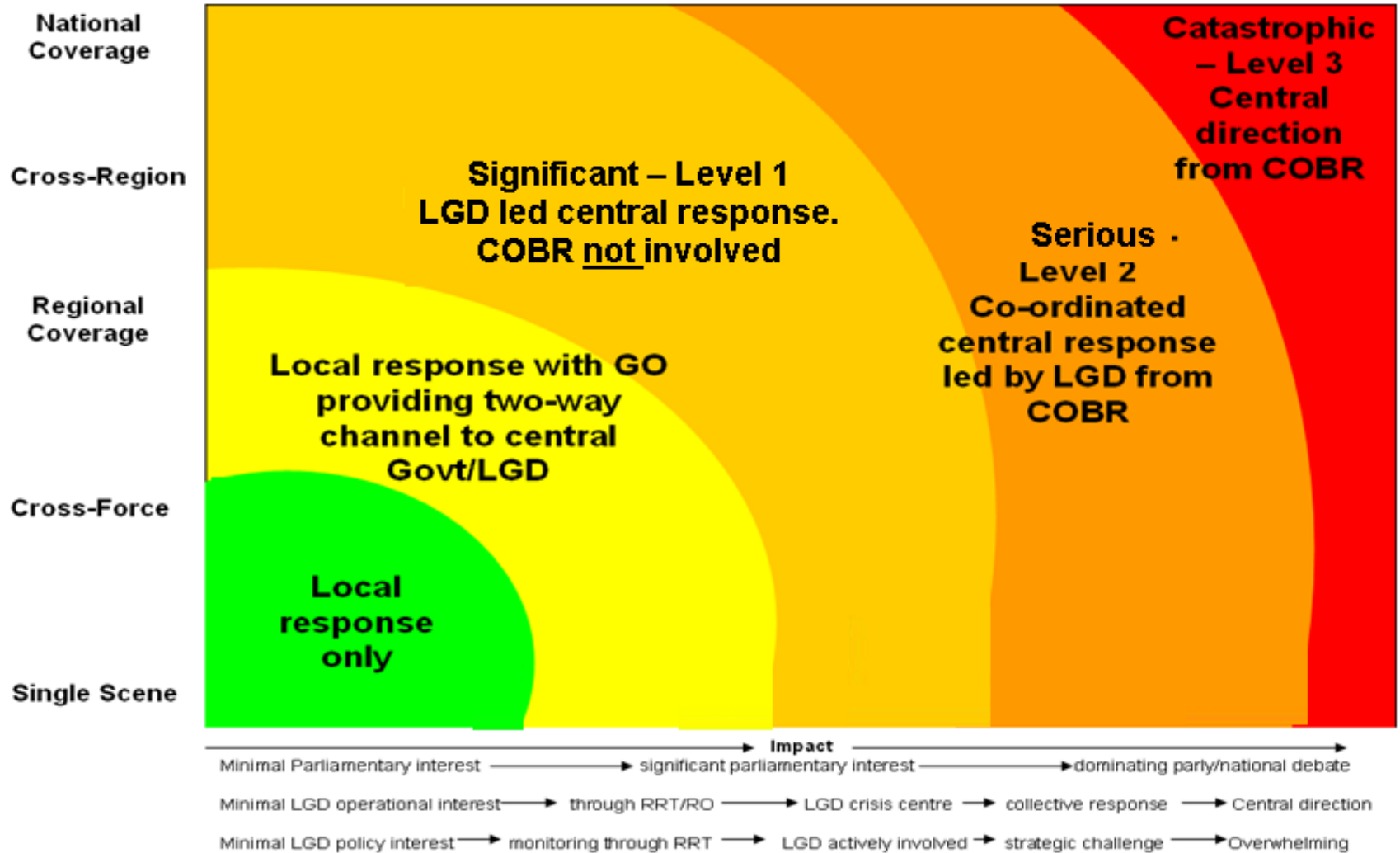
## – 3 key roles

1. rapid collective decision-making
2. authorise deployment of national assets
3. provide strategic advice

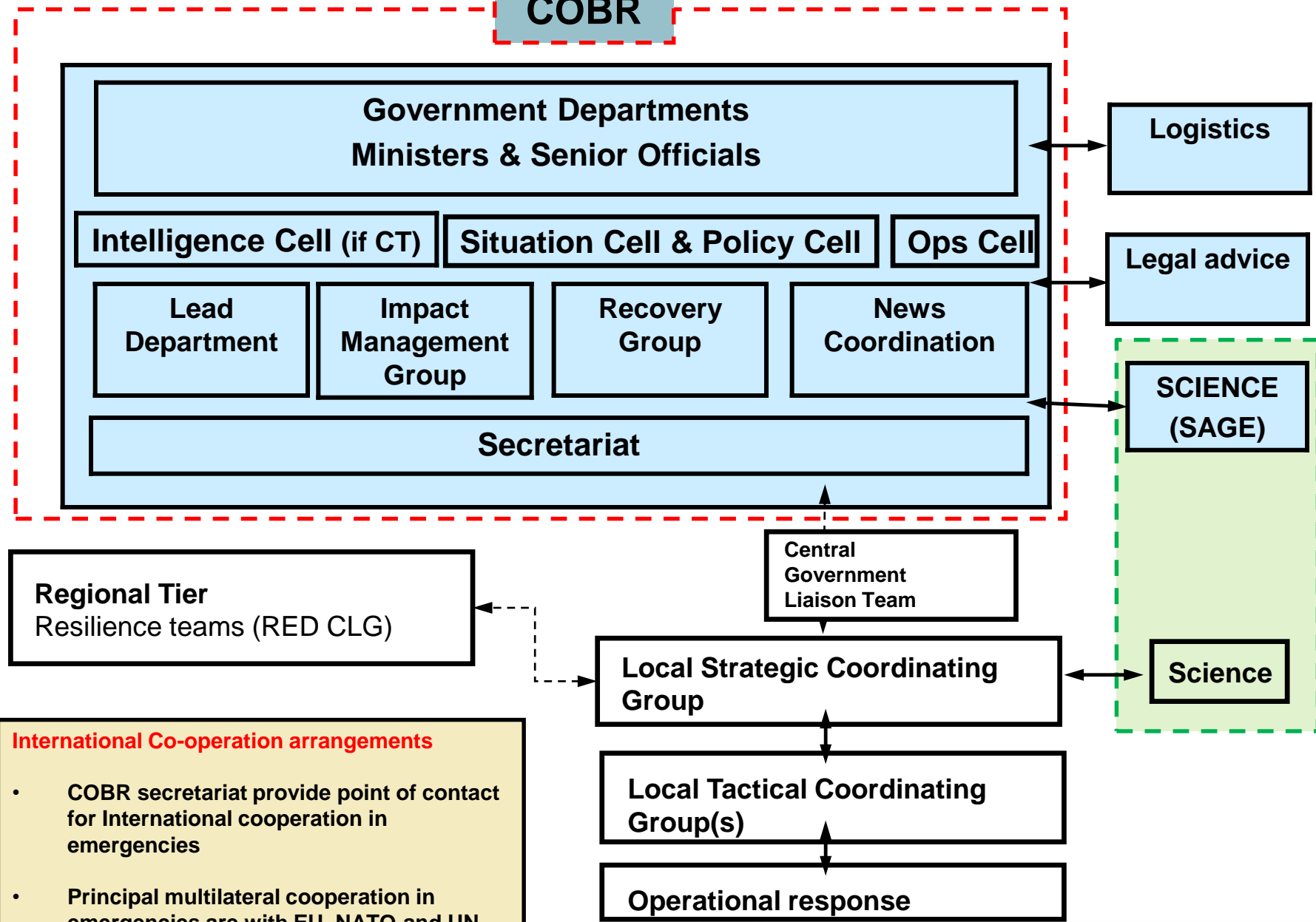




# Flexible response



# COBR

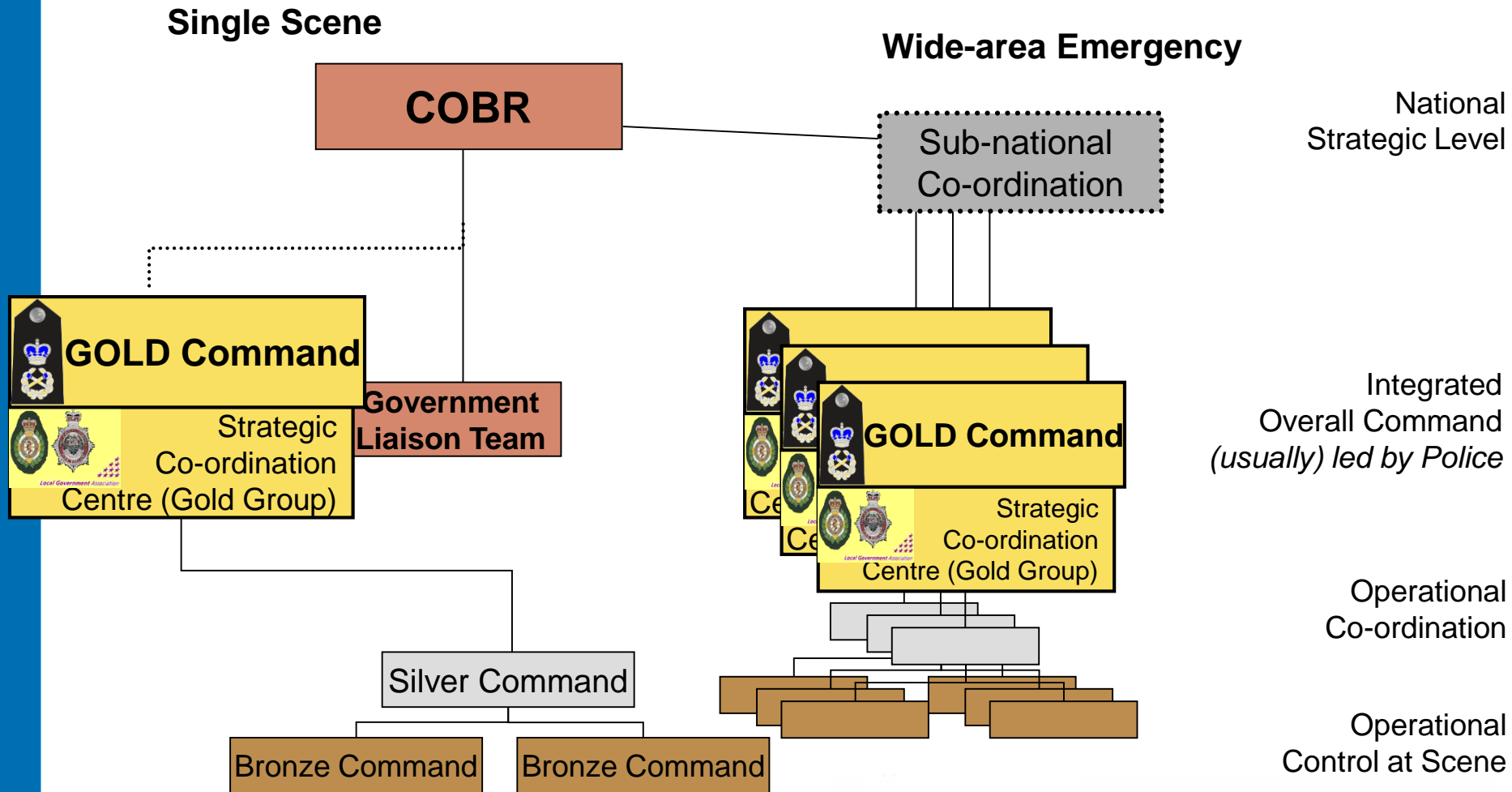


**International Co-operation arrangements**

- COBR secretariat provide point of contact for International cooperation in emergencies
- Principal multilateral cooperation in emergencies are with EU, NATO and UN organisations



# Organisation



# Information Management

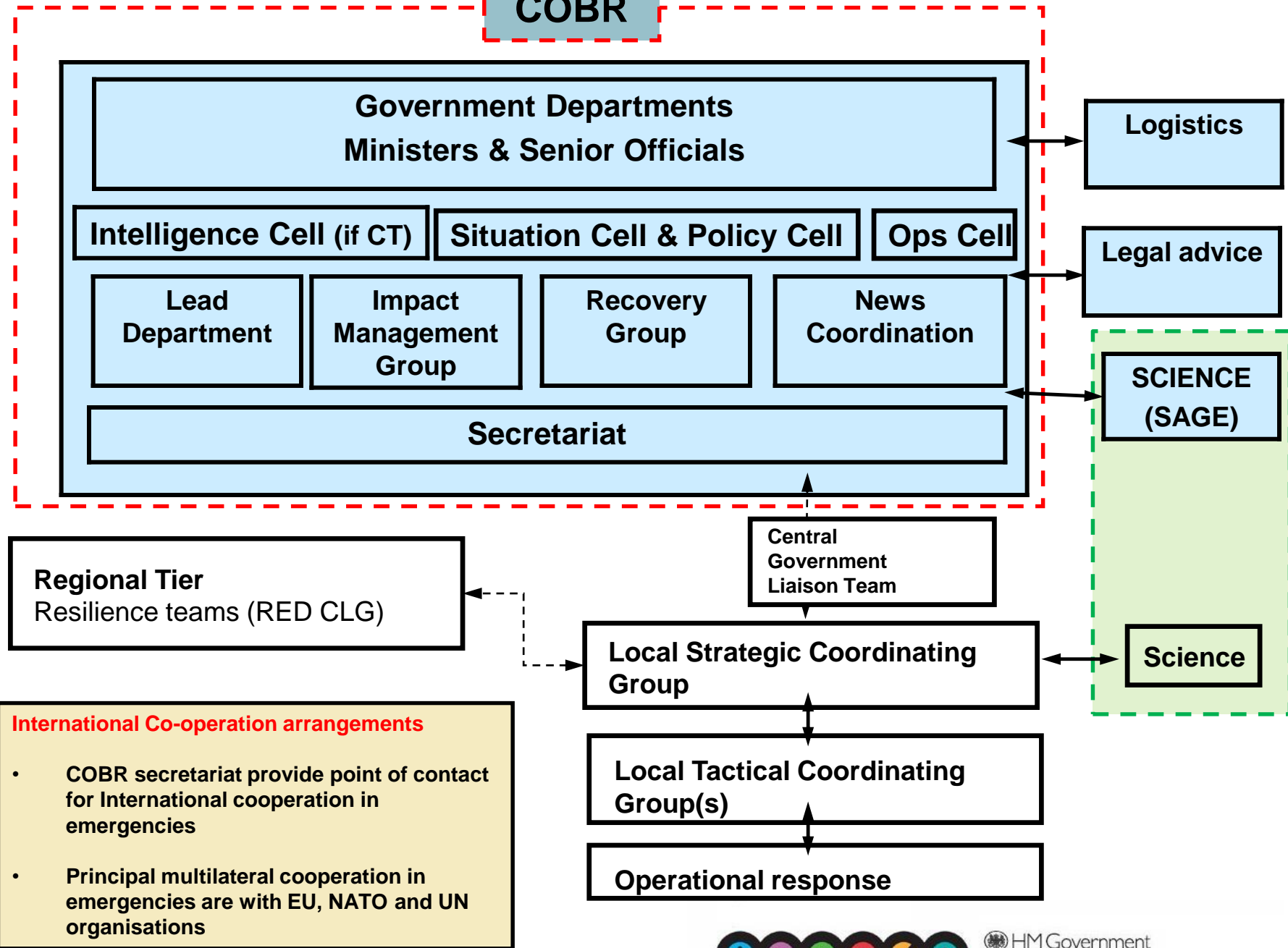
## Command Control Coordination



- Having the right information is important
- Having the same information is crucial!



# COBR



# Commonly Recognised Information Picture

## The 'CRIP'

- Short
- Factual
- Accessible

The image displays three overlapping emergency information graphics:

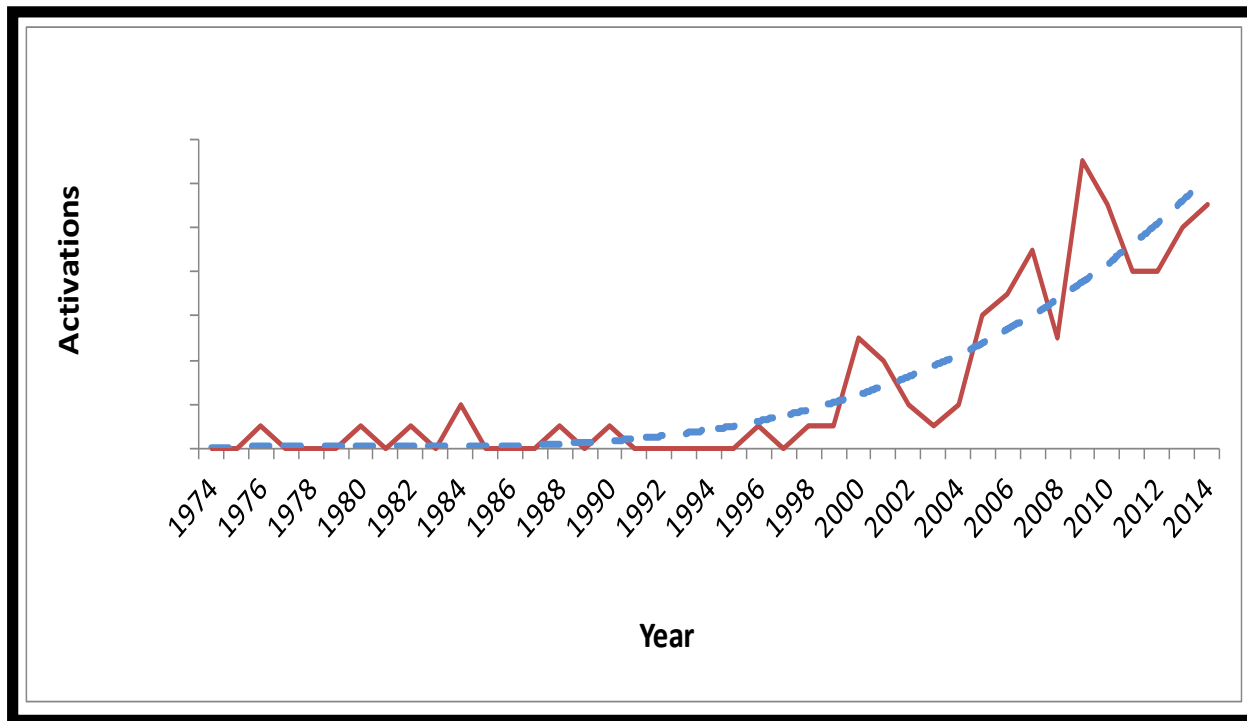
- CRIP Poster (left):** Features the text "OFFICIAL", "CRIP", "Winter Flooding 2015", "COMMONLY RECOGNISED INFORMATION PICTURE", "CRIP 11", "(New information in red)", "Contact: Civil Contingencies Secretariat - 020 7276 6373", "Information correct as of 0800, Sunday 27 December 2015", and "CCSCONTROL@CABINET-OFFICE.X.GSI.GOV.UK".
- Flood Guidance Statement (top center):** A blue header with the text "Flood Guidance Statement". Below it, a "Statement" dated "7:30hrs Sunday 27 December 2015" is followed by four maps of England and Wales showing flood risk levels for Monday (28 Dec), Tuesday (29 Dec), Wednesday (30 Dec), and Thursday (31 Dec). A red area is highlighted on the Monday map.
- Flood Warnings Map (right):** A map titled "Flood warnings currently in force" from the Environment Agency. It shows numerous red warning symbols across the East of England region. The map includes labels for locations like Ipswich, Colchester, and London. A legend indicates "Flood Warning".

Source: EA 0745 27 Dec



# COBR activations

- **Ministers are using COBR more and more**



## Recent Activations

- Zika
- Ebola
- Kidnaps
- Paris Attack
- Tunisia Attack
- Nepal Earthquake,
- Philippines Typhoon
- Potential industrial action in the rail sector & prison service
- Calais disruption
- Flooding





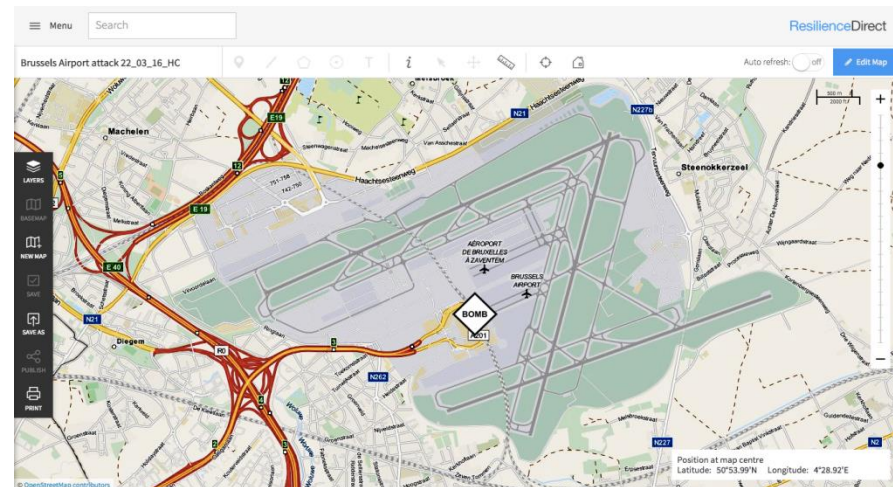
# Coordination, “Grip” and Public Perception



# ResilienceDirect

ResilienceDirect is a service built for the Resilience Community, by the Resilience Community. A secure platform for sharing information that supports effective multi-agency working and offers greater sense of shared situational awareness.

- Securely store and share plans
- Create groups and pages
- Manage permissions to groups/pages
- Response area
- Notifications



- Ordnance Survey mapping data
- Create your own drawing layers
- Import your own data
- Access to live 3<sup>rd</sup> party data (data visualisation)

# Lessons

---

- Information management is the key
- Relationships are crucial to avoiding misunderstanding
- Practice and exercise information management.

Avoid –

- bad decisions,
- Internal confusion,
- loss of confidence