



Sea Empress 1996



Napoli 2007

# Prepared for the worst?

Roger Proudfoot  
Estuarine & Coastal Monitoring &  
Assessment Manager

# The Great Ones Look Ahead

*“Some people skate to the puck. I skate to where the puck is going to be”* Wayne Gretzky

*“In preparing for battle I have always found plans useless but planning is indispensable”* Dwight D Eisenhower

*“A man who doesn't think and plan long ahead, will find trouble right at his door”* Confucius

# Environment Agency Role

- ➔ prevent or minimise the impact of incidents;
- ➔ investigate the cause of incidents & consider enforcement action, &;
- ➔ seek remediation, clean-up or restoration of the environment.

# Topics

➔ Collaboration

➔ Capability & capacity – skills development / equipment sharing

➔ Standards – scientific integrity

➔ Data & information – “One Touch” approach

➔ Monitoring Preparedness Assessment





# Centre for Environment, Fisheries & Aquaculture Science



Centre for Environment  
Fisheries & Aquaculture  
Science



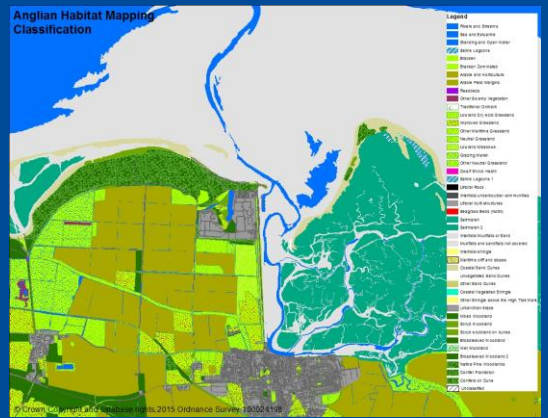
*Weymouth*



*Lowestoft*









# Natural England & Joint Nature Conservation Committee





# Capable People



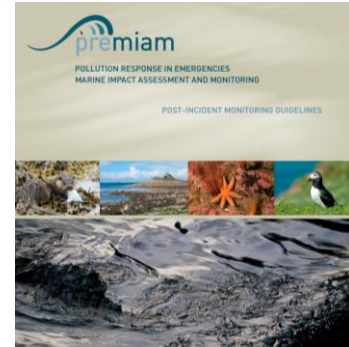
Operational, Technical and Support Specialist Categories	
1	Aware
2	Basic
3	Capable
4	Distinguished
5	Expert



# Scientific Integrity



- PREMIAM Guidance ([www.cefas.co.uk/premium/guidelines/](http://www.cefas.co.uk/premium/guidelines/))
- International standards apply (ISO/CEN)
- WFD methods ([www.wfduk.org](http://www.wfduk.org))
- NMBAQC standards ([www.NMBAQCS.org](http://www.NMBAQCS.org))
- QUASIMEME
- EA WFD instructions or common monitoring standards with NE/NRW and Cefas



# “One Touch” approach



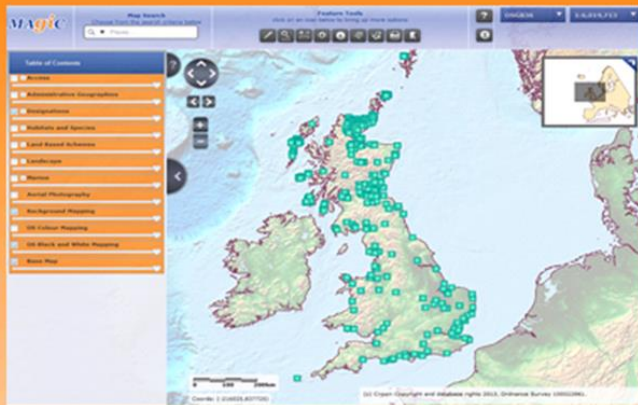
MAGIC

Maps

News

About

Help



Interactive mapping at your fingertips

Get Started

## What is MAGIC?

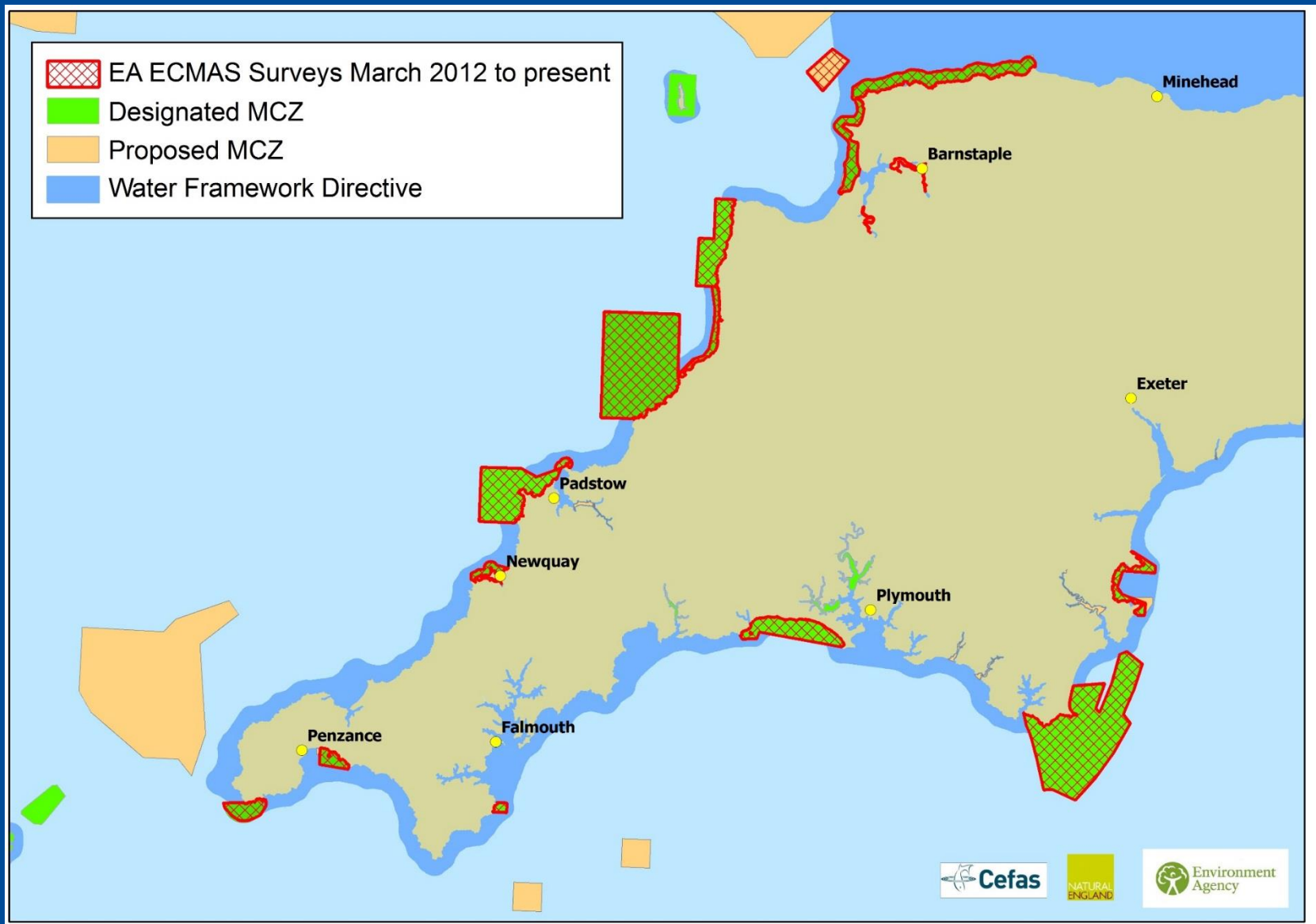
The MAGIC website provides authoritative geographic information about the natural environment from across government. The information covers rural, urban, coastal and marine environments across Great Britain. It is presented in an interactive map which can be explored using various mapping tools that are included. Natural England manages the service under the direction of a Steering Group who represent the [MAGIC partnership organisations](#).

## Latest News

Under the Marine Theme in the MAGIC map, a new sub-theme has been added called **Water Framework Directive (WFD): Clearing the Waters for All**. It contains information to support operators to carry out WFD assessments to comply with the law when seeking consent for their activities in estuarine and coastal waters.

[Continued >>](#)





# Monitoring Preparedness Assessment Scores

No.	Scenario	Scientific Guidance	Skills & Knowledge	Equipment	Funding	Responsibility & Management	Integration & Coordination	Support & Buy-in	Practice		MPAS
1	Sea Empress 1996	2	3	3	2	2	3	2	1		18
2	MSC Napoli 2007	2	3	3	3	3	3	3	1		21
3	Sea Empress equivalent 2014	4	4	3	3	3	3	3	2		25
4	MSC Napoli equivalent 2014	4	3	3	4	4	4	4	2		28
5	Subsea release offshore – present day	3	2	2	2	4	4	2	2		21
6	Small localised oil spill near shore – present day	4	5	4	5	5	4	5	2		34

# Summary

- ➔ Collaborate
- ➔ “Go to Service” established
- ➔ “One Touch” approach
- ➔ Skills Development & Maintenance
- ➔ Scientific Integrity
- ➔ Exercise

Photo courtesy Barry Thomas: Redcar Sunset





**Napoli 2007**



**Ice Prince 2008**



**Riverdance 2008**



**PIB oiled bird 2013**