



Exercise
GREY SEAL



National Response Exercises - Environment Groups

Learning from Response and Exercises

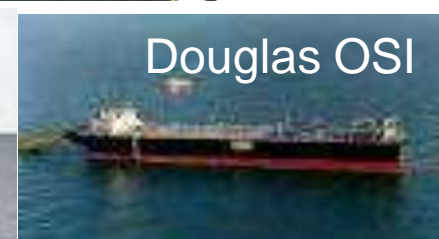
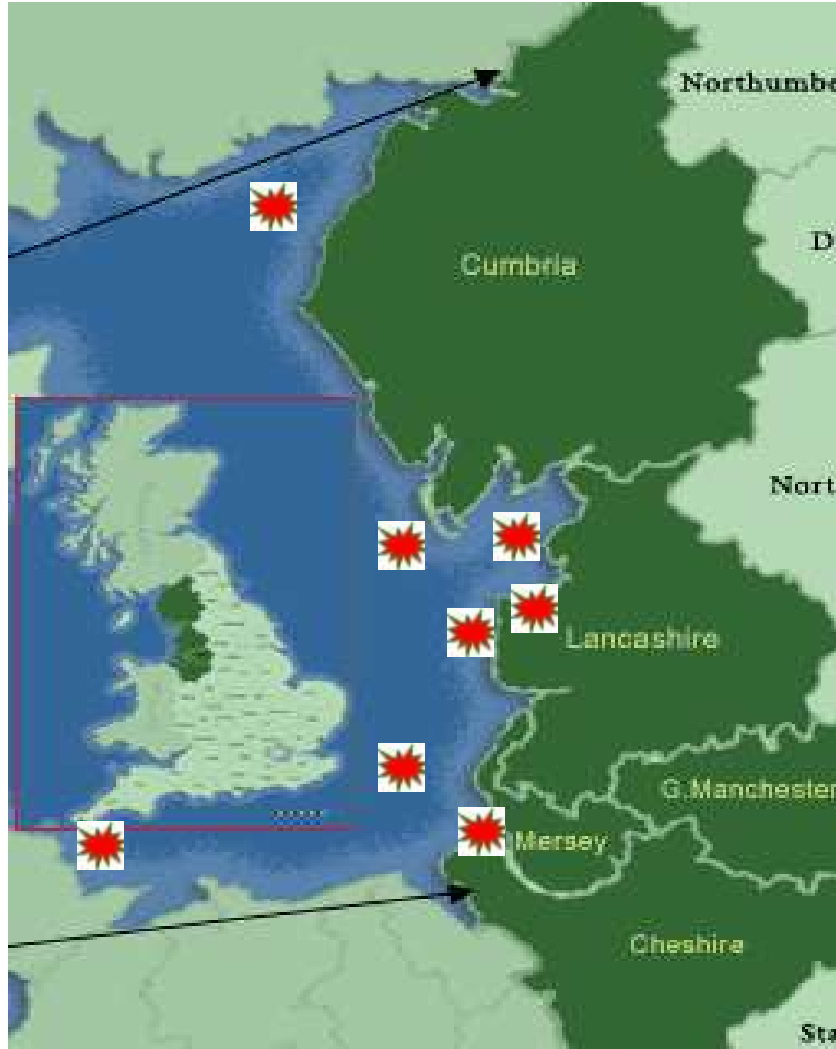
Stuart Hankey MEPS



Content

- ➔ Who am I
- ➔ Command & Control- overview
- ➔ Environment Groups - overview
- ➔ Key themes
- ➔ Embedding learning

Who am I ?



Command & Control – NCP

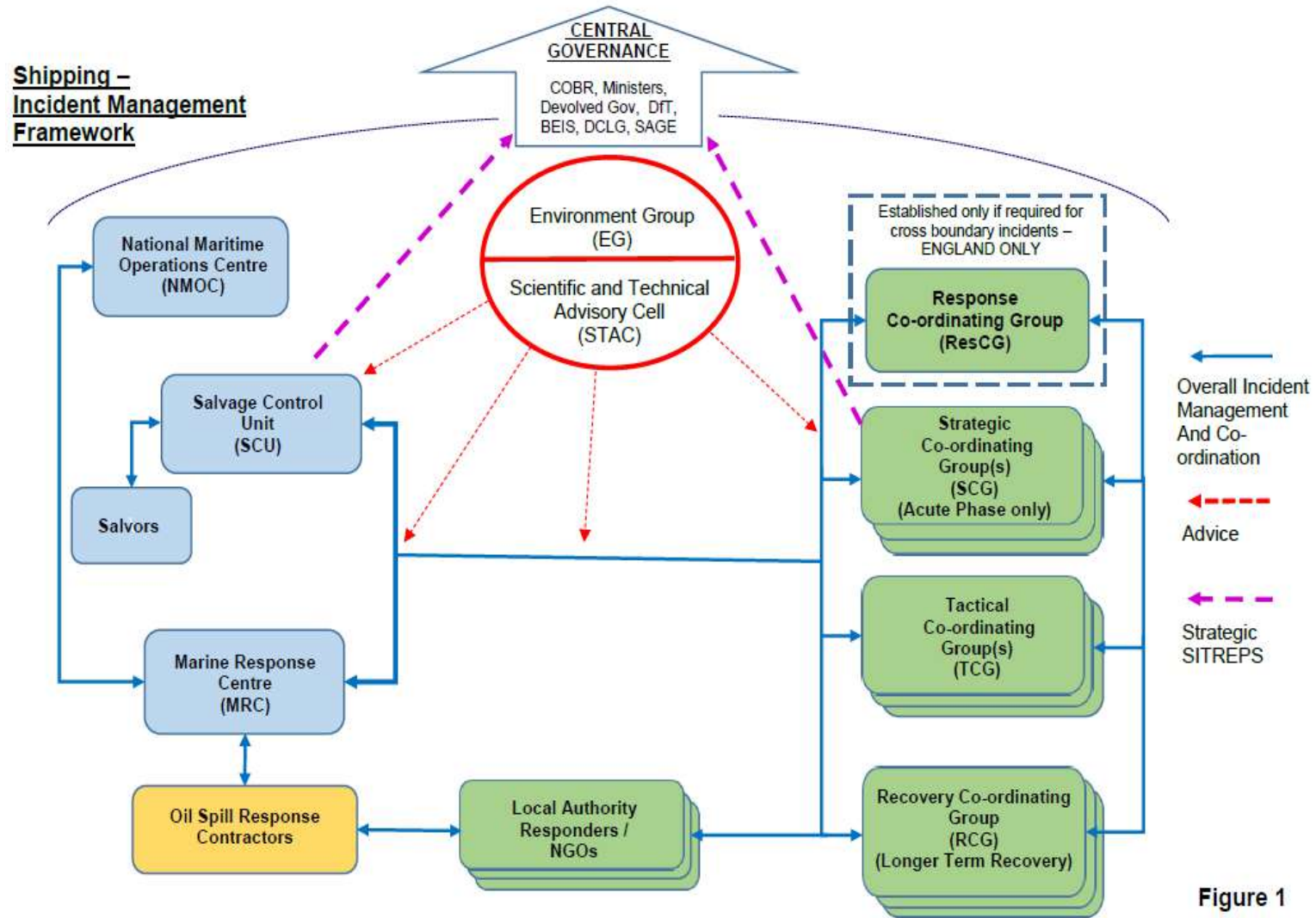
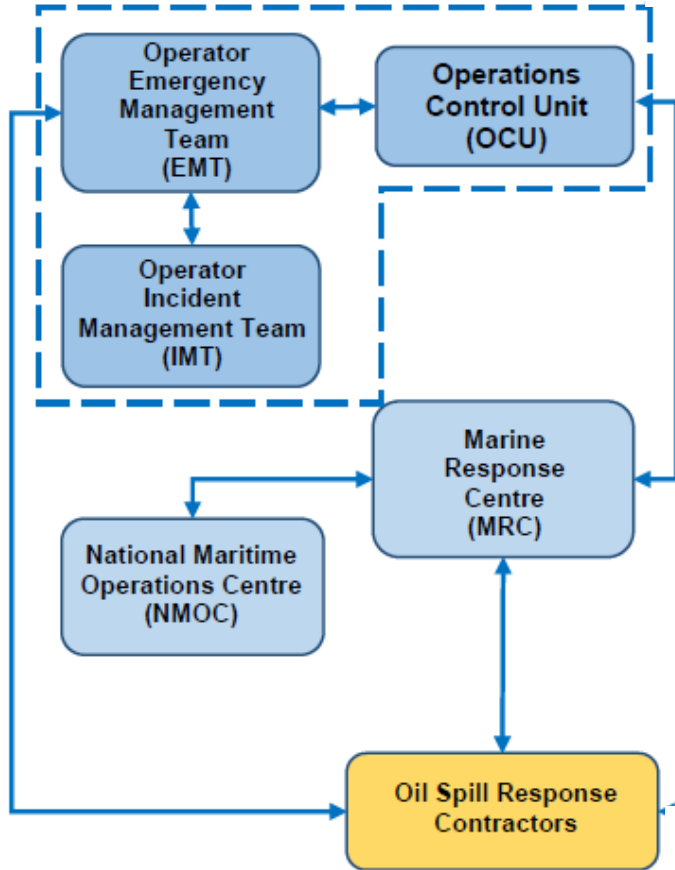
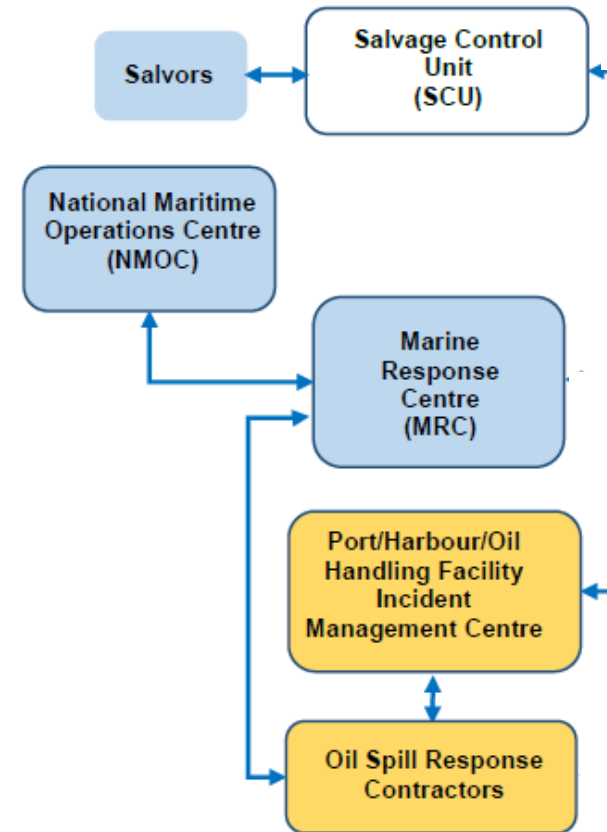


Figure 1

**Offshore Installation –
Incident Management Framework**



**Port/Harbour/Oil Handling Facility –
Incident Management Framework**

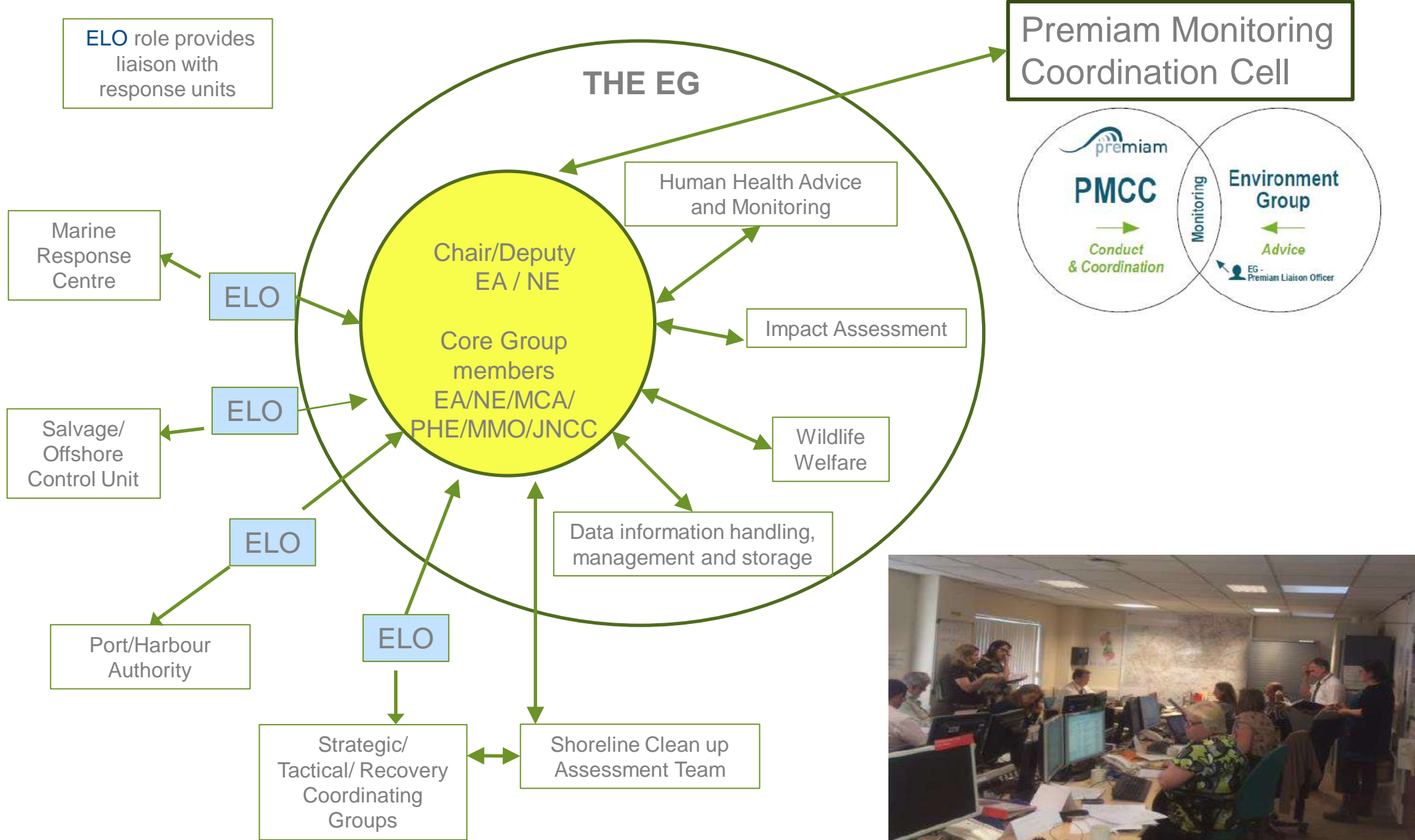


The Environment Group (EG)

- ➔ Multi-agency group with core members
- ➔ May convene for small as well as large incidents
- ➔ Provides advice / guidance on health and environmental sensitivities and risks
- ➔ Advise on preferred response options to achieve a net environmental benefit

Note

Advisory group that has no powers of direction or enforcement



National Exercises

Exercise Dragon (offshore installation)



- ➔ 10th and 11th September 2014
- ➔ 15 response cells
- ➔ 180 participants
- ➔ 39 organisations

Exercise Grey Seal (shipping)

Exercise
GREY SEAL



- ➔ 22nd and 23rd November 2016
- ➔ 10 response cells
- ➔ 500 participants
- ➔ 60 organisations

Key Themes arising from National Exercises

➔ Preparation

- ➔ Role Identification – response is resource hungry
- ➔ Consistent Training
- ➔ Partnership working

➔ Exercising

- ➔ Multi Agency Exercising
 - Activation / Escalation / Response
 - Recommendation for cross boundary waste response exercise

➔ Response

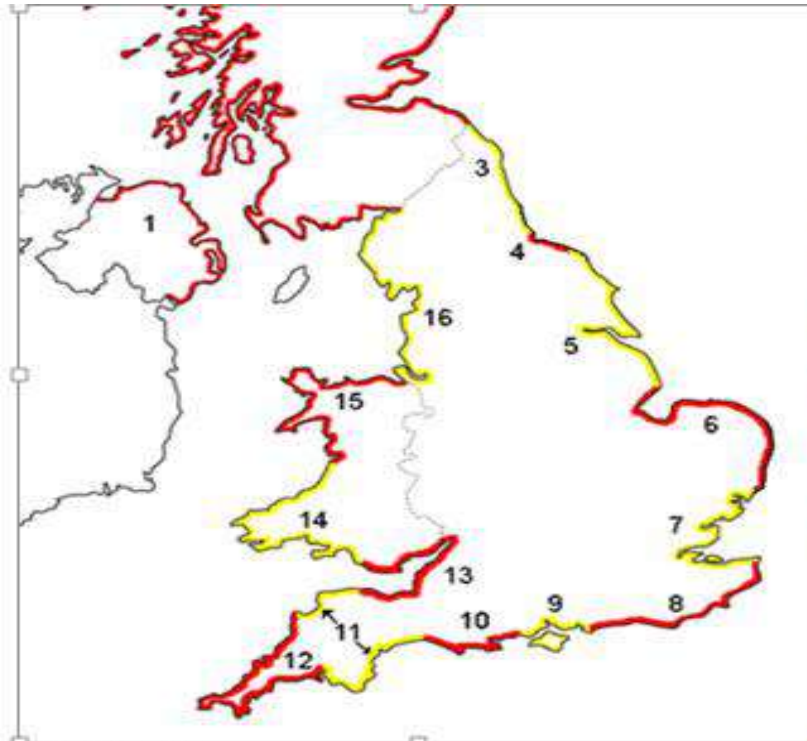
- ➔ One response – incidents know no boundaries
 - consideration for joint EG during cross boundary incidents
 - horizon scan

- ➔ Communications are Key
 - Oil spill models agree which model is being used during response
 - Email overload / distributions
 - Consistent messages – one version of the truth
 - Partnership working

Embedding learning

- ➔ MCA developing a standard EG operating guidance template
- ➔ MCA developing use of Resilience Direct during response
- ➔ Single EG activation point of contact 24/7 (England)
- ➔ Reduction in English Environment Groups -12 reducing to 7 groups
 - (6 near shore, 1 offshore)
 - ➔ More exercising opportunities
 - ➔ Increase resilience
- ➔ Cross boundary waste response table top exercise (MCA 2018)

Environment Groups



New EG boundaries

3	North East	Green	North East England
4	Tees		
5	Humber	Blue	East of England
6	Norfolk and The Wash		
7	Greater Thames	Yellow	South East England
8	Kent and Sussex		
9	Solent	Pink	South West England
10	Dorset		
11	Devon	Red	Bristol Channel
12	Cornwall		
13	Bristol Channel	Purple	North West England
16	North West		
		Orange	Offshore

Thank You